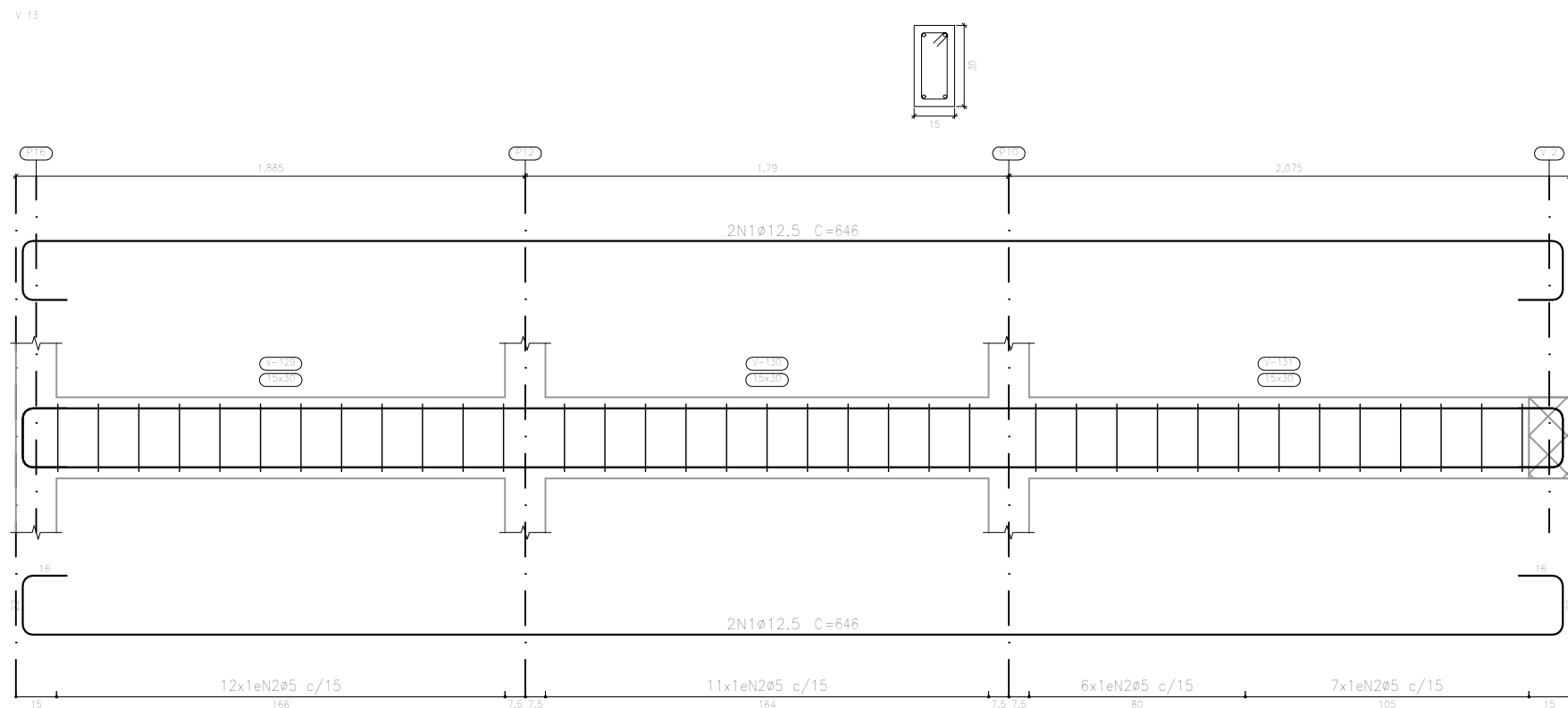
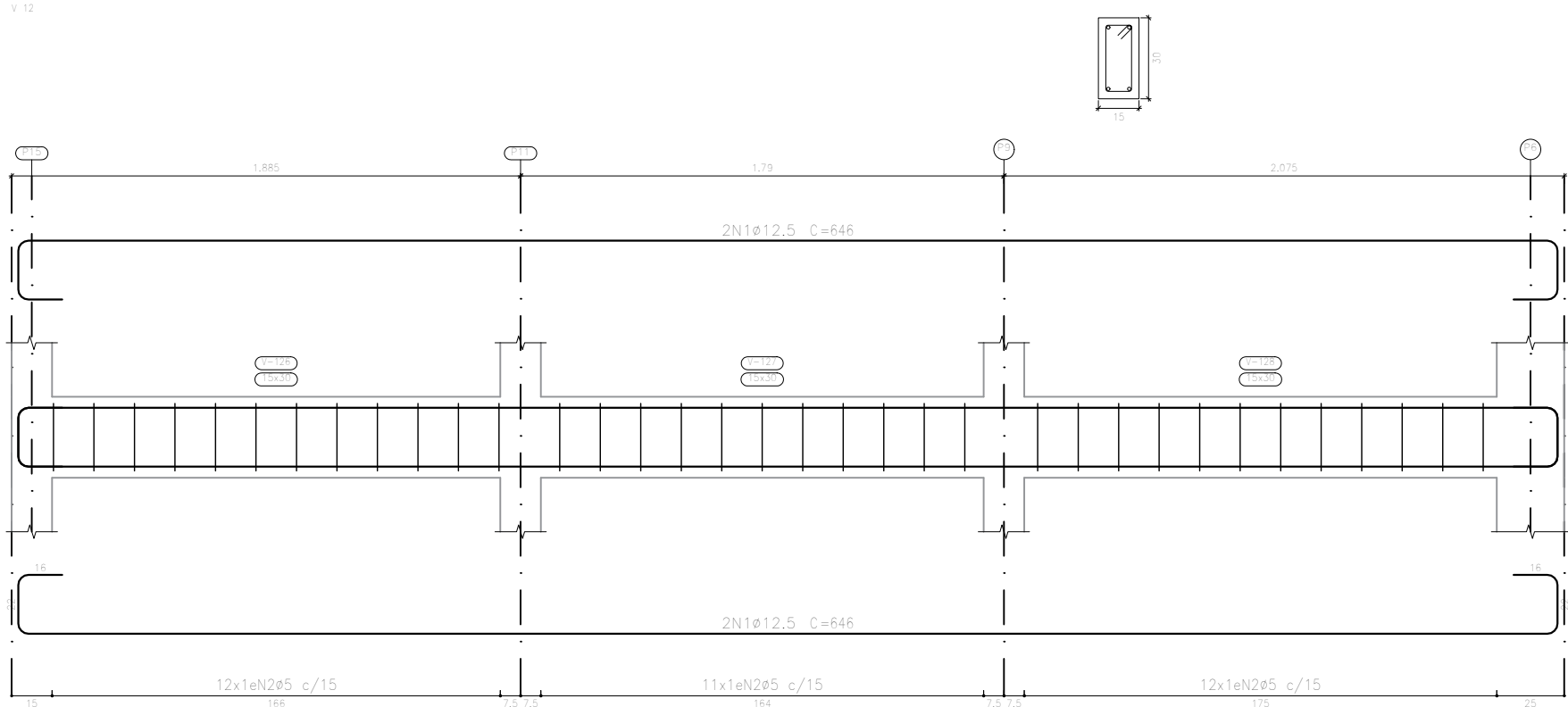
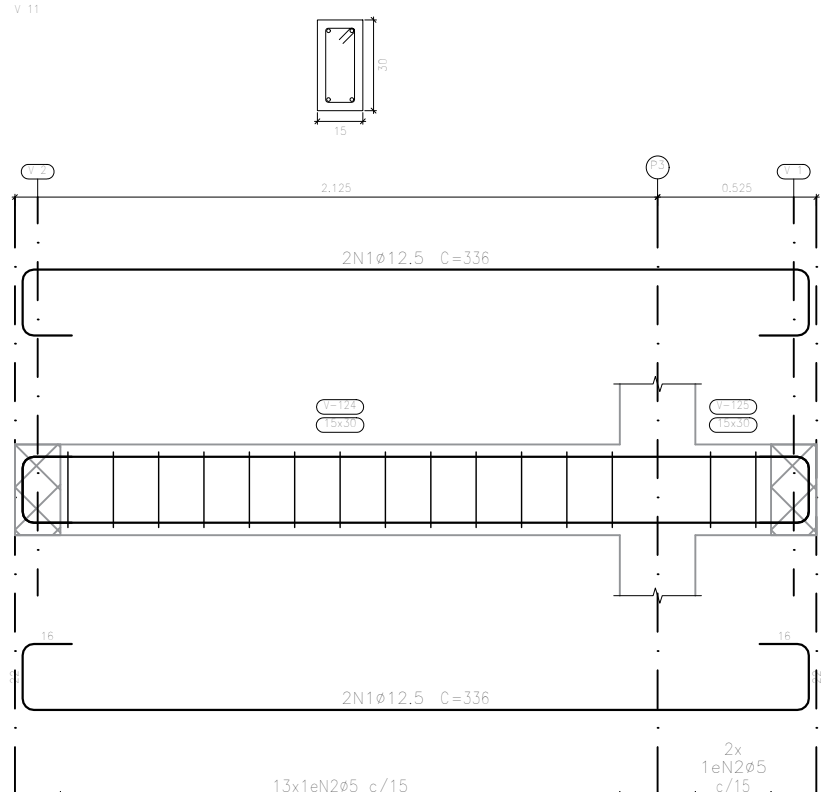
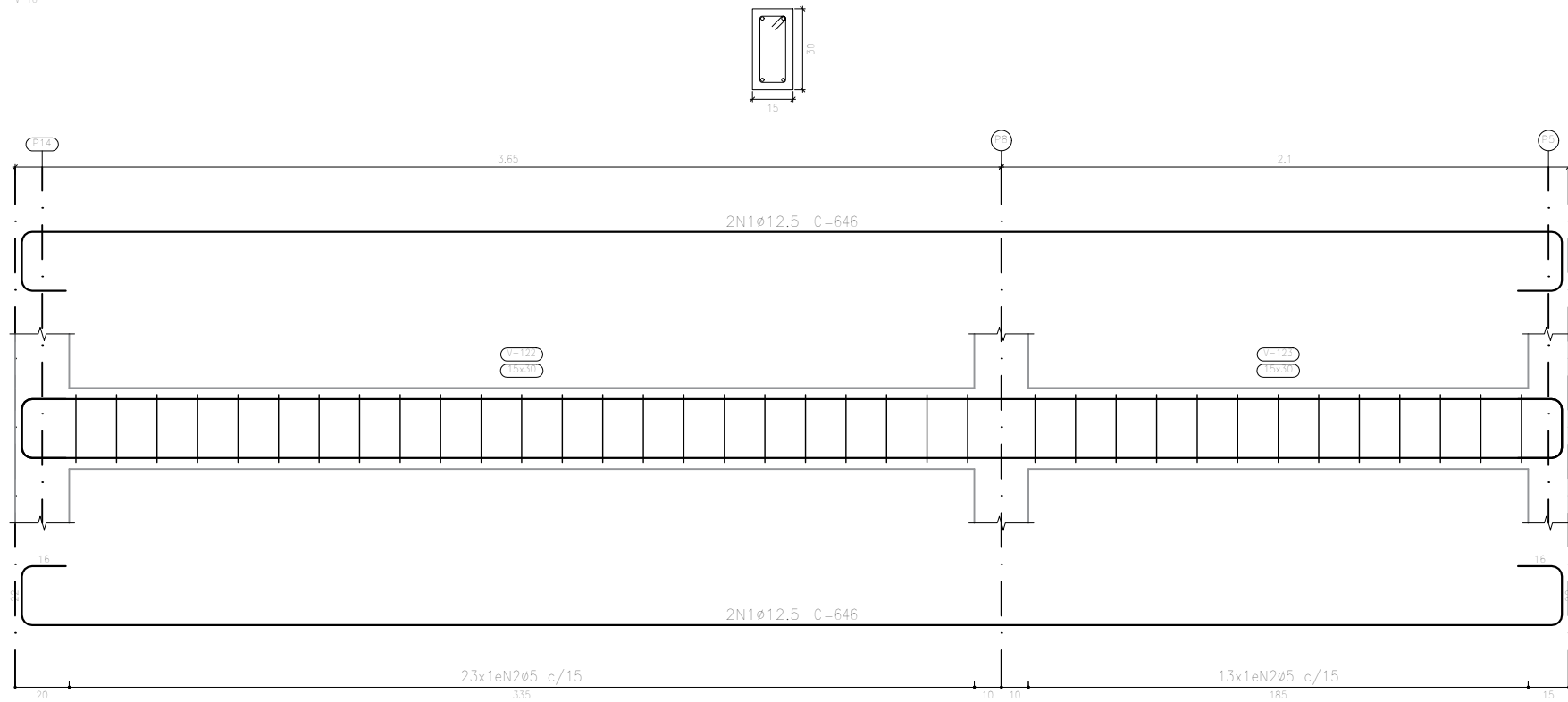
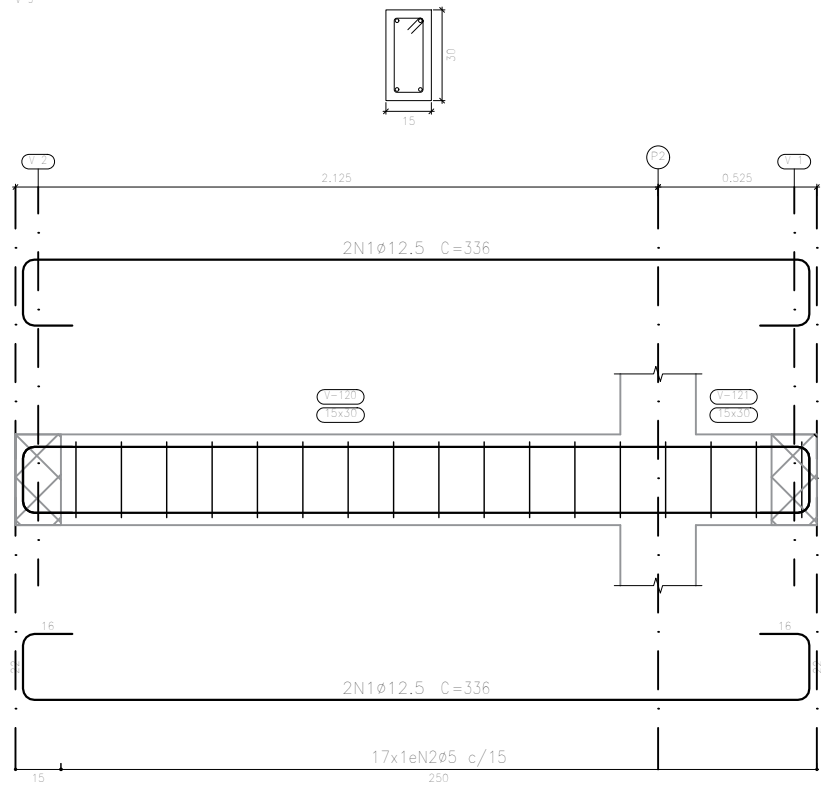
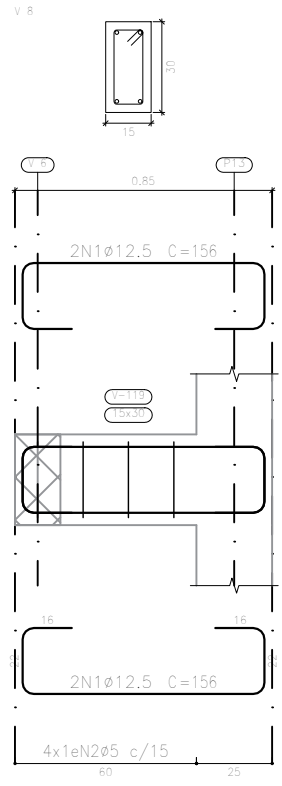
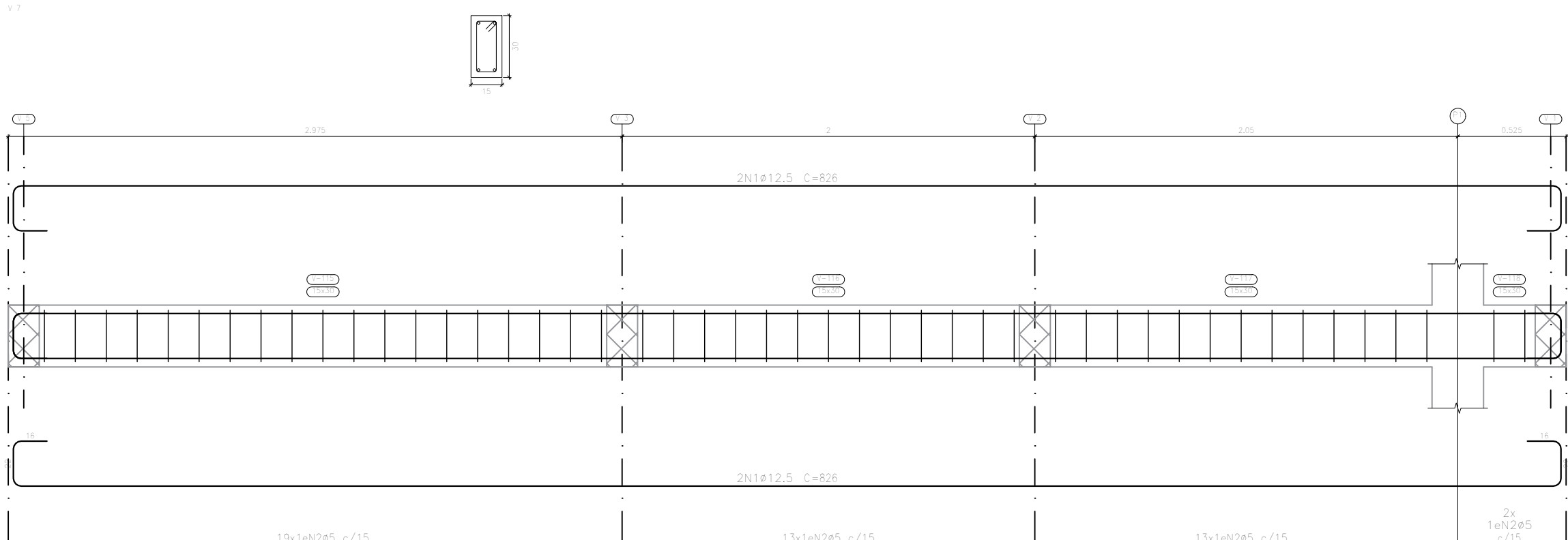
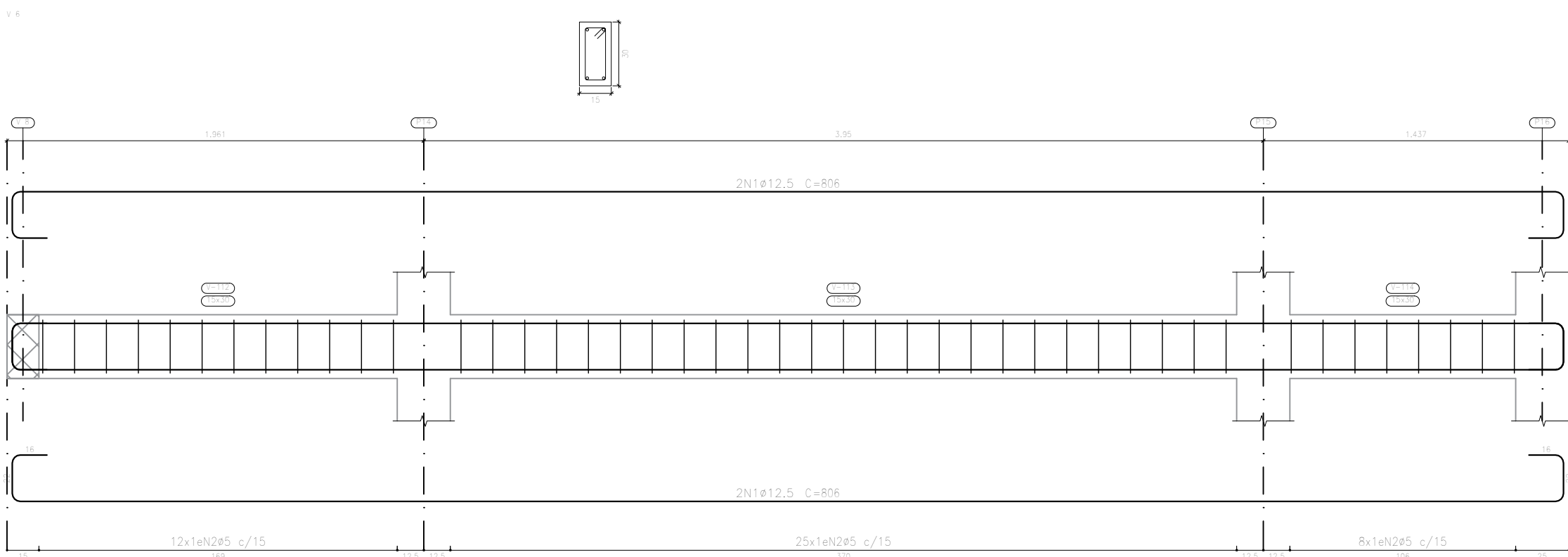
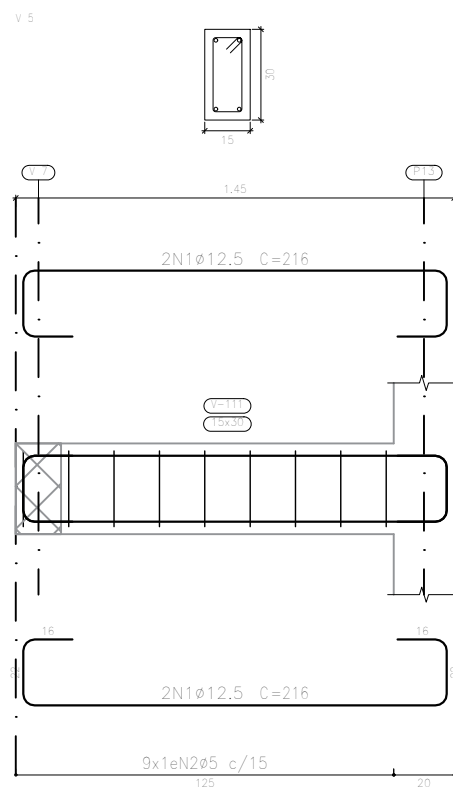
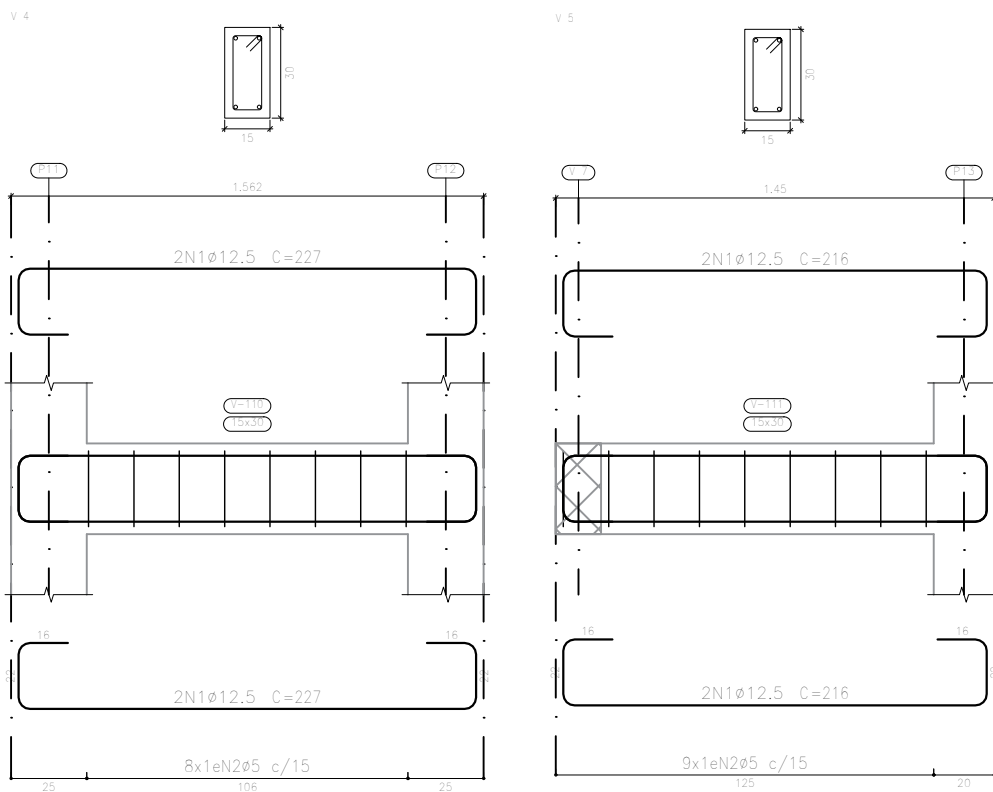
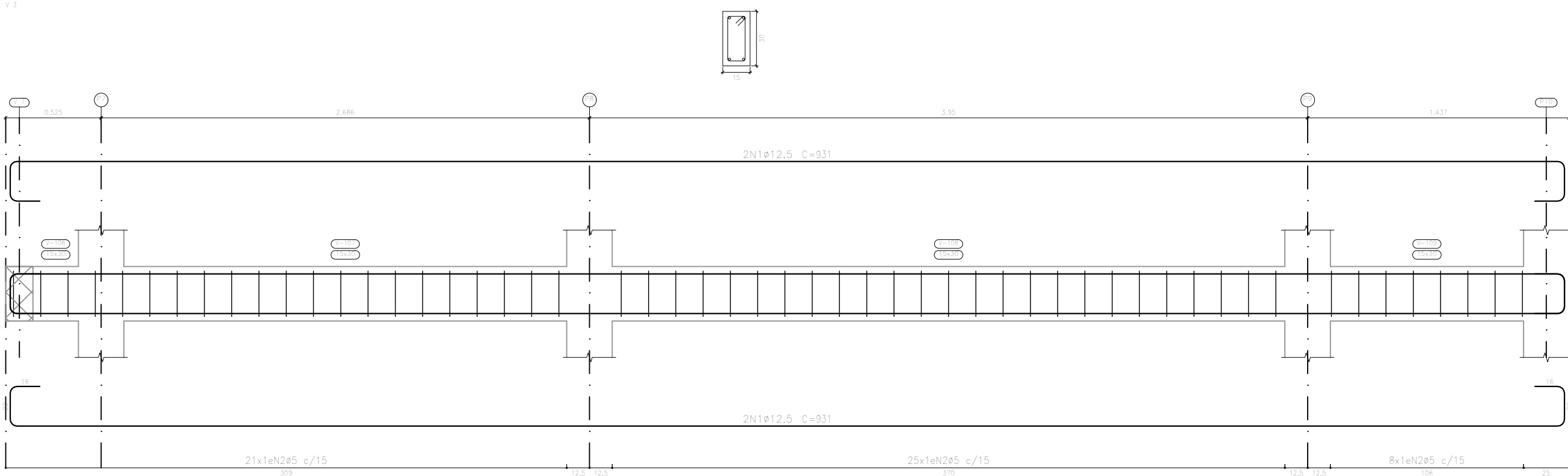
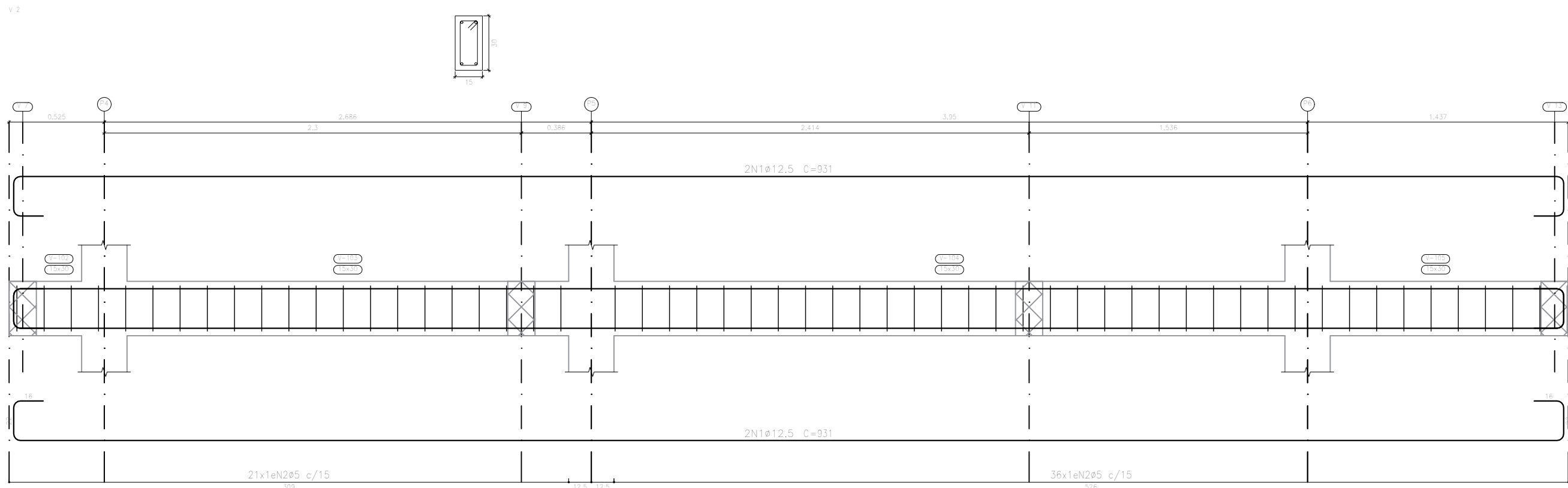
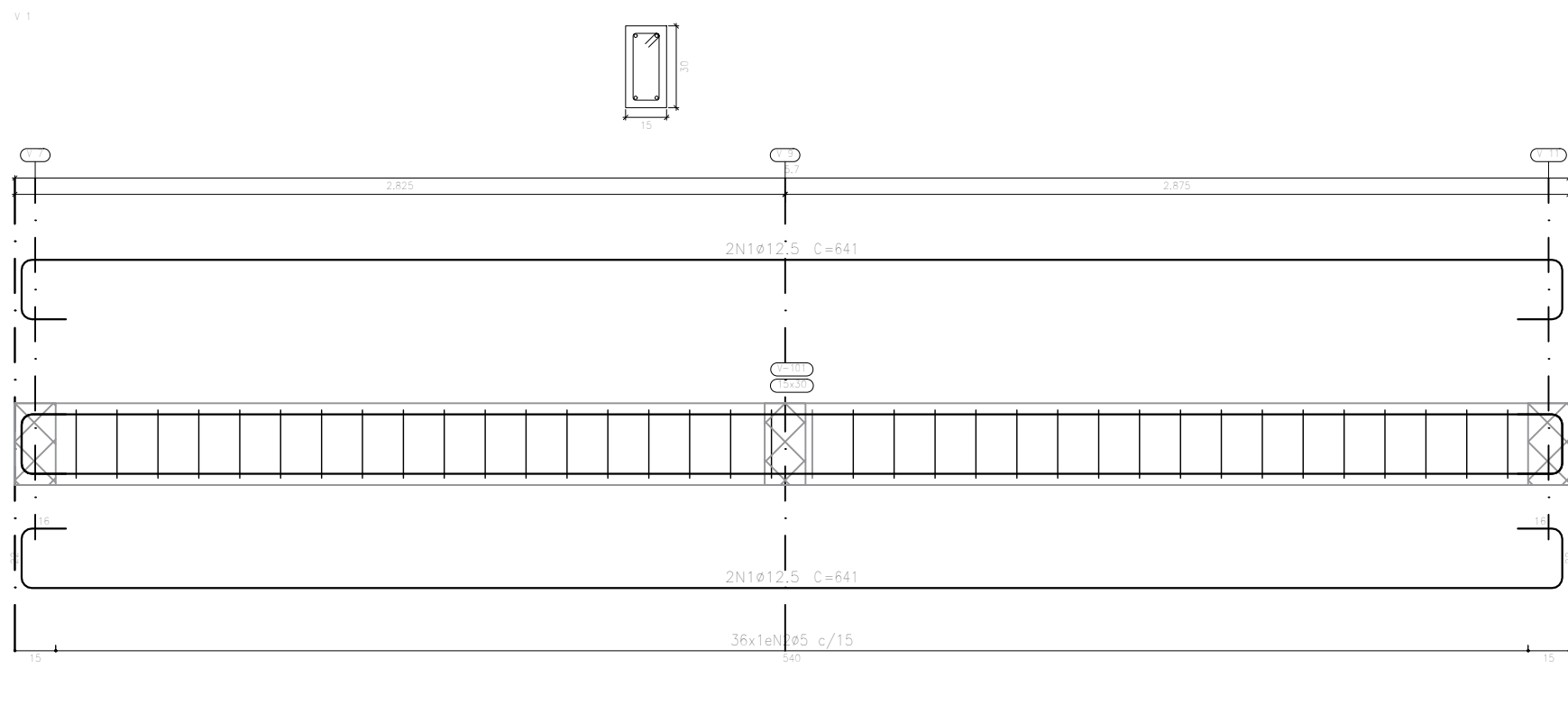


Térreo  
Desenho de vigas  
Concreto: C25, em geral  
Aço das barras: CA-50 e CA-60  
Aço dos estribos: CA-50 e CA-60  
Escala vigas 1:20  
Escala seções 1:20  
Escala aberturas 1:20

Resumo Aço	Comp. total	Peso+10%	Total
Desenho de vigas	(m)	(kg)	
CA-50	ø12,5	293,8	311
CA-60	ø5	311,2	54
Total			365



Elemento	Pos.	Diam.	Q.	Esquema (cm)	Comp. (cm)	Total (cm)	CA-50 (kg)	CA-60 (kg)
V 1	1	ø12,5	4		641	2584	24,7	
	2	ø5	35		78	2806		4,4
Total+10%							27,2	4,8
V 2	1	ø12,5	4		931	3724	35,9	
	2	ø5	57		78	4444		7,0
Total+10%							39,5	7,7
V 3	1	ø12,5	4		935	3724	35,9	
	2	ø5	54		78	4212		6,6
Total+10%							39,5	7,3
V 4	1	ø12,5	4		227	908	8,7	
	2	ø5	8		78	624		1,0
Total+10%							9,6	1,1
V 5	1	ø12,5	4		216	864	8,3	
	2	ø5	9		78	702		1,1
Total+10%							9,1	1,2
V 9	1	ø12,5	4		336	1344	12,9	
	2	ø5	17		78	1326		2,1
Total+10%							14,2	2,3
V 11	1	ø12,5	4		336	1344	12,9	
	2	ø5	15		78	1170		1,6
Total+10%							14,2	2,0
V 6	1	ø12,5	4		806	3224	31,1	
	2	ø5	45		78	3510		5,5
Total+10%							34,2	6,1
V 7	1	ø12,5	4		826	3304	31,8	
	2	ø5	47		78	3666		5,8
Total+10%							35,0	6,4
V 8	1	ø12,5	4		156	624	6,0	
	2	ø5	6		78	312		0,5
Total+10%							6,6	0,6
V 10	1	ø12,5	4		646	2584	24,9	
	2	ø5	36		78	2806		4,4
Total+10%							27,4	4,8
V 12	1	ø12,5	4		646	2584	24,9	
	2	ø5	35		78	2730		4,3
Total+10%							27,4	4,7
V 13	1	ø12,5	4		646	2584	24,9	
	2	ø5	36		78	2806		4,4
Total+10%							27,4	4,8
ø5							10,0	5,3
ø12,5							311,3	0,0
Total							511,3	53,8



Estado do Rio Grande do Sul  
**MUNICÍPIO DE SÃO MARTINHO**  
CNPJ 87.613.097/0001-96

CONTEÚDO:  
Detalhamento de Vigas - Térreo

ENDEREÇO:  
Av Geert Lorenz, nº 1404,  
Centro, São Martinho - RS

Proprietário:

Jeancarlo Hunhoff  
Prefeito Municipal

Responsável Técnico:

Ismael A. Faggon - Engenheiro Civil  
CREA/RS 231384

Escala:

1:25

Área:

62,81 m²

Data:

Mar/2022

Desenho:

Ismael

Prancha:

09/13